

LIMERICK

ONE

SHOPPING PARK



Limerick's Omni Channel Retail Destination

DUNNES
STORES

The Range
Home, Leisure & Garden

next

Boots

heatons
expect more, pay less

**SPORTS
DIRECT.COM**

LIMERICK // LOCATION

// TRANSPORT

Limerick One Shopping Park is located on the east side of Childers Road the main internal route around the south side of Limerick City approximately 2km from the City Centre.



AERIAL \ LIMERICK ONE SHOPPING PARK



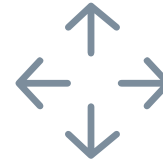
LIMERICK \ \ STATS



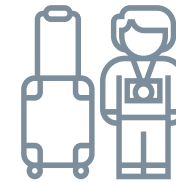
Limerick is Ireland's third largest city with a population of 195,175 across the city and county.
(Census 2016)



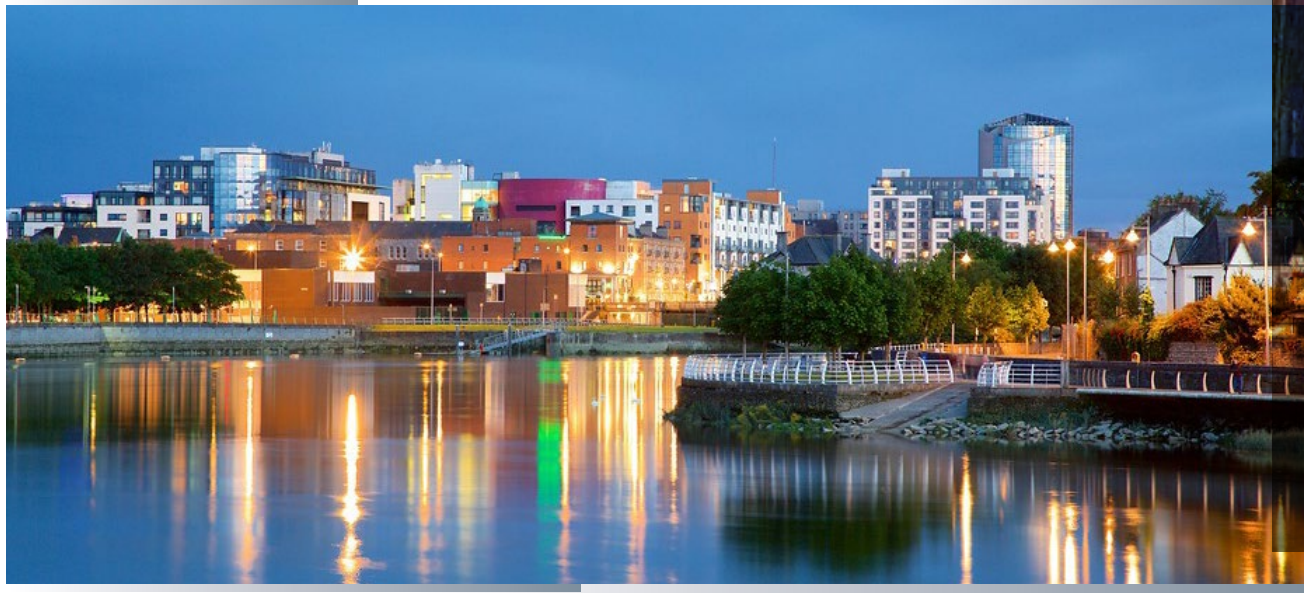
Limerick is the capital of the mid-west region.



Limerick is the second largest urban area in the province of Munster.



Limerick is Ireland's 5th largest tourism revenue generator.



OPPORTUNITIES // THE PARK



High profile location on Childers Road c. 2km south east of the City Centre.



Located off the M7 Motorway which gives access from Galway, Cork and Dublin.



Located close to University of Limerick with over 21,000 students enrolled.

Johnson & Johnson



GE Capital

Nearby major employers include Dell, Johnson & Johnson, Intel and GE Capital.



\\ THE PARK contd...



Limerick's
only open use
shopping park.



18,580 sq.m
(200,000 sq. ft.) of retail
accommodation.



Over
50,000
customer cars enter
the park per week.



1,222
surface car spaces.

\\ SUPERB RETAILER REPRESENTATION

DUNNES STORES



CATCHMENT

DEMOGRAPHICS



Limerick City and County population accounts for 195,175 people. The population of Limerick City stood at 58,319 in 2016 (Census 2016), an increase of 2.1% since 2011. This figure is expected to surpass 80,000 by 2022 (RPG Population Targets 2016 – 2022).



The Limerick region has become an important industrial hub, with well-established representation across manufacturing, medical technologies, international professional services, engineering, electronics and food sectors.



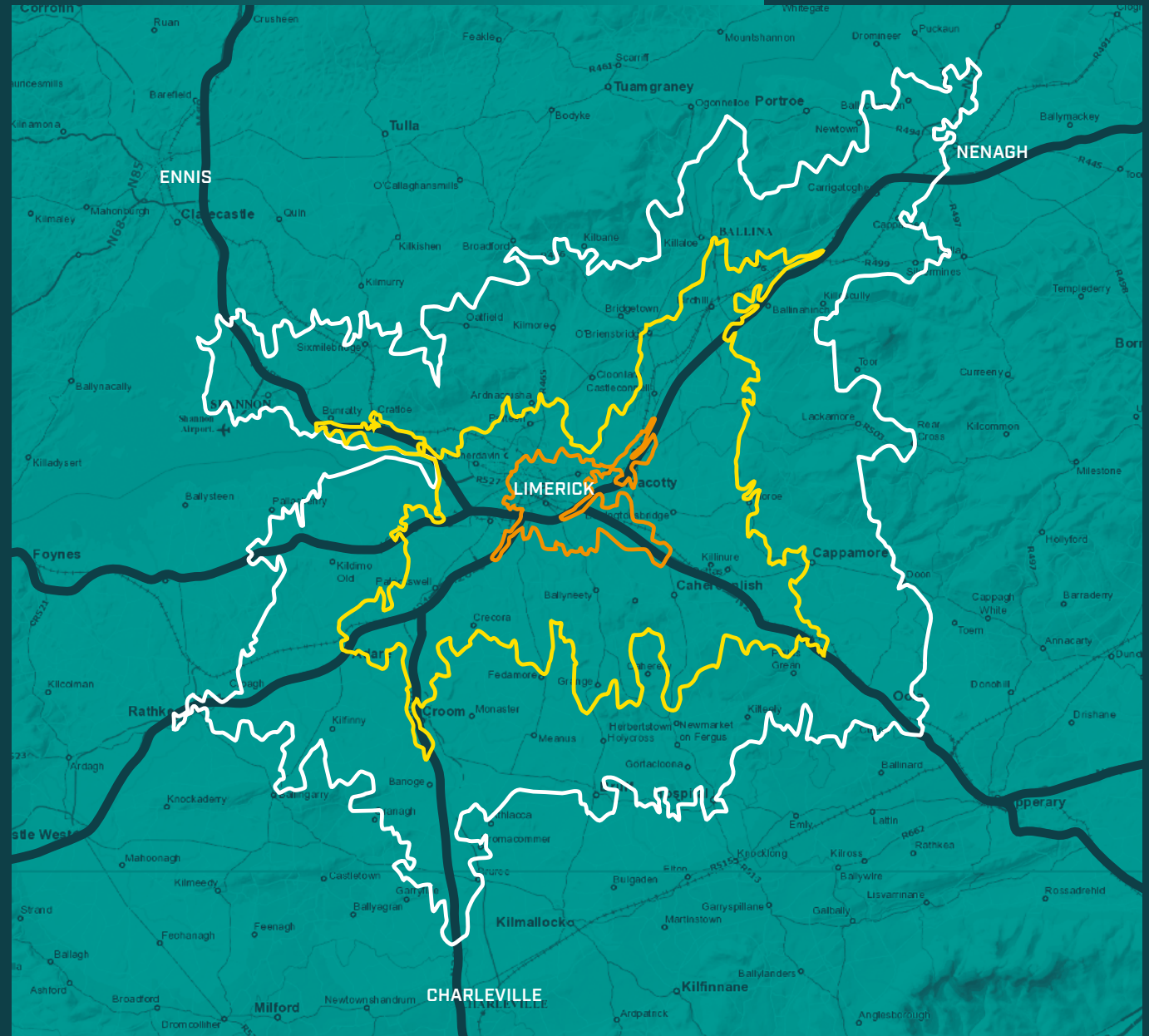
Limerick has the highest disposable income per person in Ireland outside of Dublin (CSO 2016).



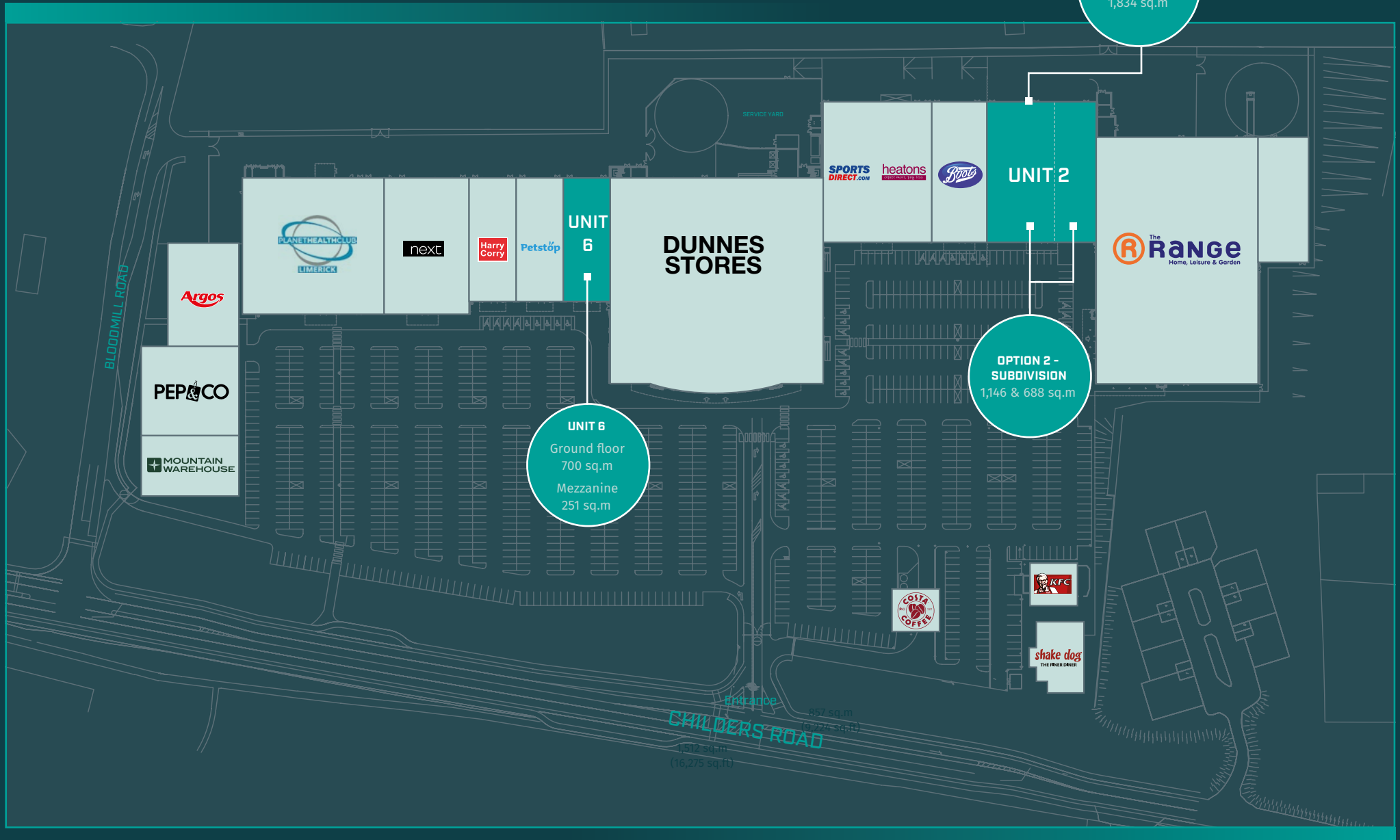
Shannon International Airport is located 25km to the north of the city and caters for a variety of national and international destinations. The most popular of these include London, Manchester, New York, Boston, Philadelphia, Faro and Malaga.

DRIVE TIMES

- 10 minutes
- 20 minutes
- 30 minutes



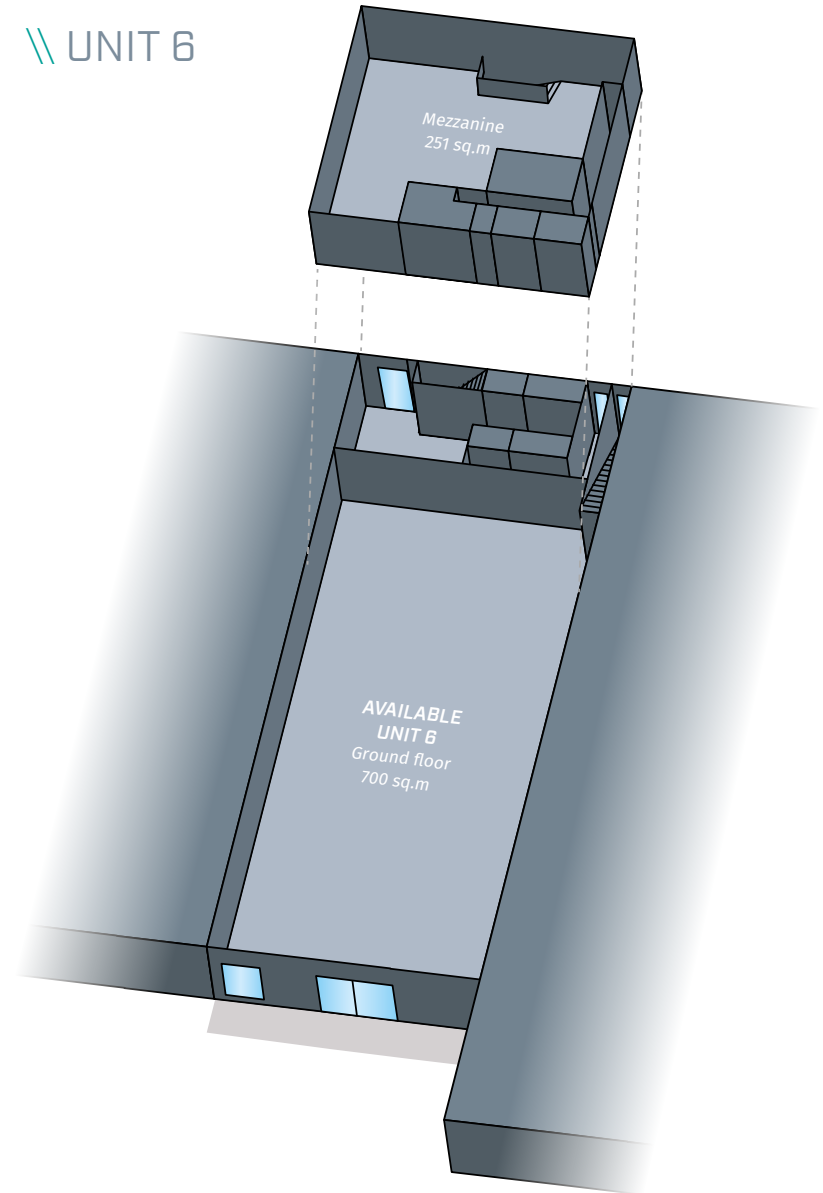
OPPORTUNITIES // LIMERICK ONE SHOPPING PARK



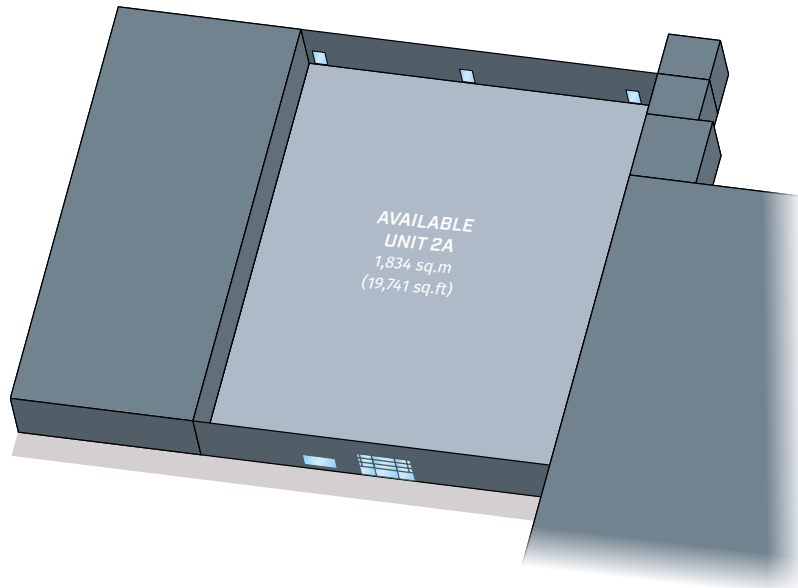
EXTERIOR IMAGE NEEDED



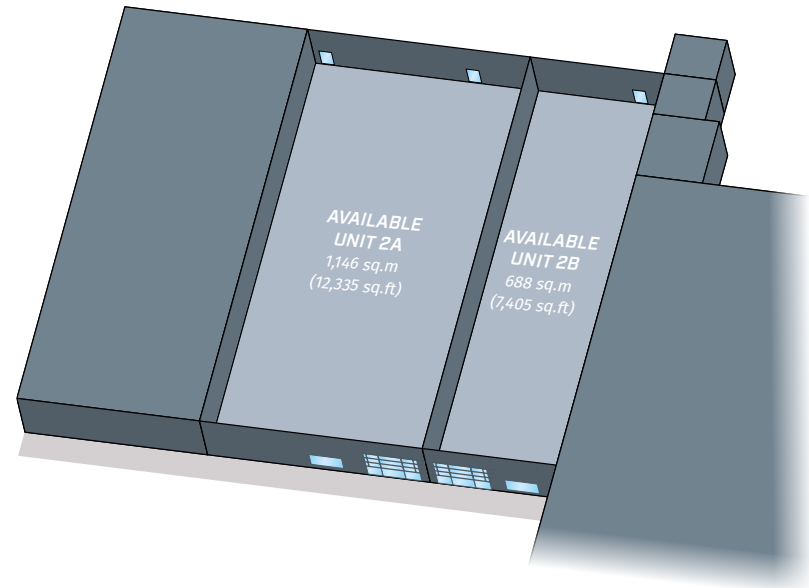
\\ UNIT 6



\\ UNIT 2 - ENTIRE



\\ UNIT 2A & 2B - SUBDIVISION





// CONTACT



Tel: 01 6477900
www.bannon.ie

JAMES QUINLAN

+353 1 6477900

jquinlan@bannon.ie

PSR: 001830-002130

These particulars are issued by Bannon on the understanding that any negotiations relating to the property are conducted through them. While every care is taken in preparing them, Bannon, for themselves and for the vendor/ lessor whose agents they are, give notice that – (a) The particulars are set out as a general outline for guiding potential purchasers/ tenants and do not constitute any part of an offer or contract. (b) Any representation including descriptions, dimensions, references to condition, permissions or licences for uses or occupation, access and any other details are given in good faith and are believed to be correct, but any intending purchaser or tenant should not rely on them as statements or representations of fact but must satisfy themselves (at their own expense) as to their correctness. (c) Neither Bannon nor any of its employees have any authority to make or give any representations or warranty in relation to the property. All maps are produced by permission of the Ordnance Survey Ireland Licence No. AU00470011 © Government of Ireland.