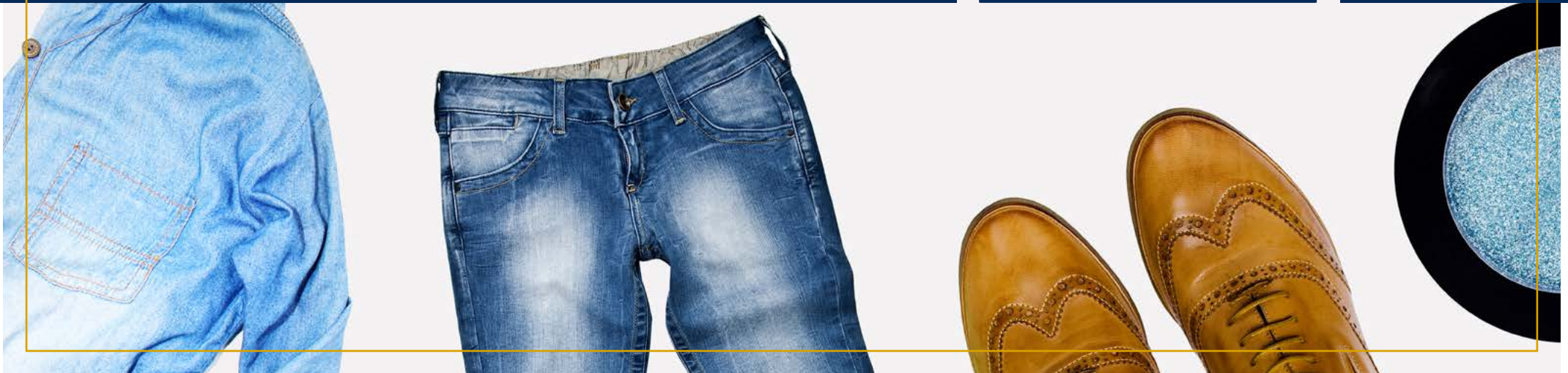




TO LET


LOCATED ON THE BUSIEST PART OF
NORTH DUBLIN'S PRIME RETAIL PITCH

**No. 19
HENRY
STREET**
DUBLIN 1






A unique four storey over basement retail opportunity on Dublin's Henry Street



Situated in a prime location on one of Ireland's busiest shopping streets



6.7m frontage onto Henry Street



335 Sq.m (3,824 sq.ft) of retail space and extending to a total area of 706.13 sq.m (7,601 sq.ft) over four levels



HENRY STREET IS ONE OF IRELAND'S PREMIER SHOPPING STREETS

Henry Street is home to Arnotts, Ireland's largest Department Store, extending to approximately 300,000 sq.ft.

3,000 car parking spaces in close proximity and excellent public transport links.

Close to Luas Cross City (tram) service which carries an estimated 10m passengers per annum.

Footfall in excess of 15.2m in 2023.

Features excellent representation from national and international retailers including brands such as:

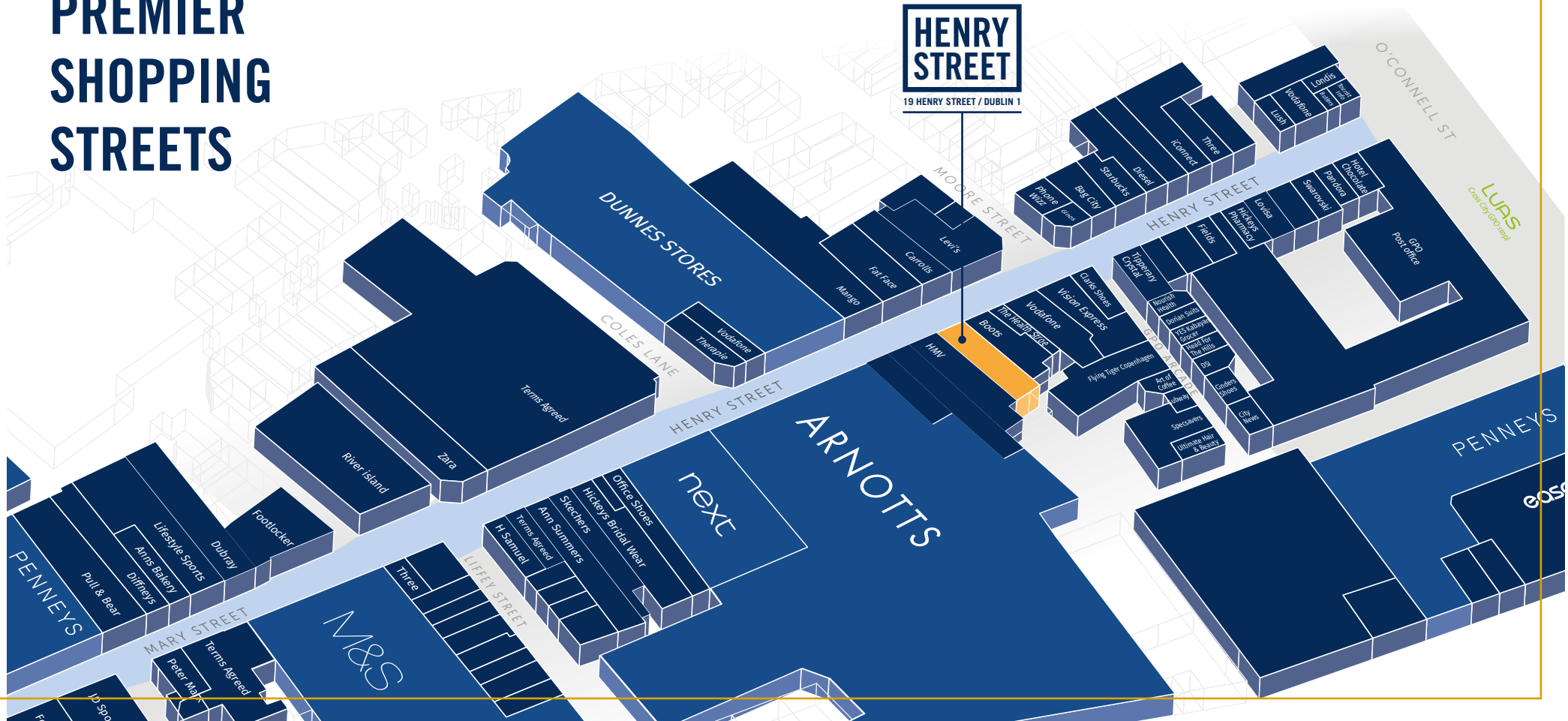
PENNEYS

DUNNES STORES

M&S
EST. 1884

RIVER ISLAND

MANGO



No.19
HENRY
STREET
DUBLIN 1



Population of
5.1 million

The 3rd highest growth
rate in Europe
(CSO 2022)



Youngest

Population in Europe
(CSO 2022)



63.4%

of the population live in Urban
Areas. 1.46 million people live
in the Local Dublin Area
(Census 2022)



5.75 million

projected population
by 2050
(CSO 2022)



2.66 million

people in employment -
highest level ever recorded
(CSO 2022)



First

in Europe for
Economic Growth



€153 billion

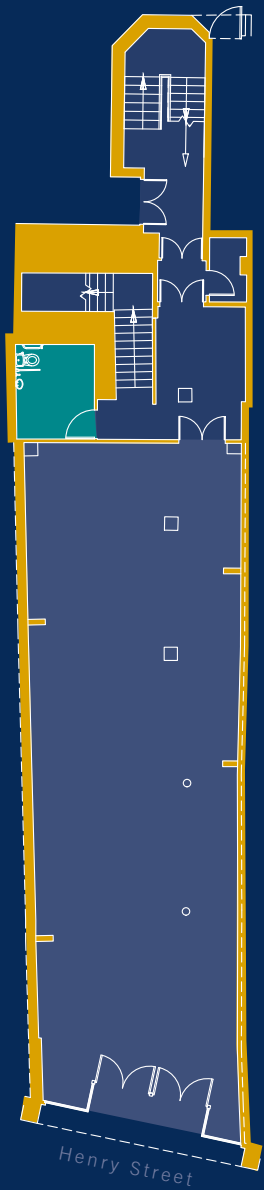
in household savings -
highest level ever recorded
(Central Bank of Ireland)



7 million

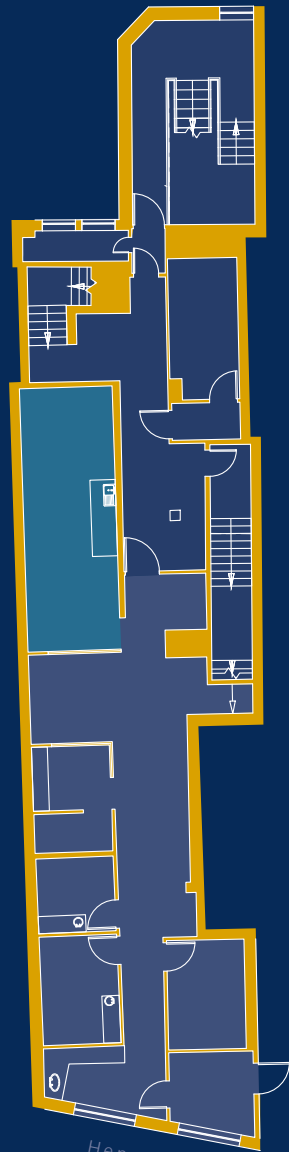
overseas visitors
in 2022
(ITIC 2022)

GROUND FLOOR



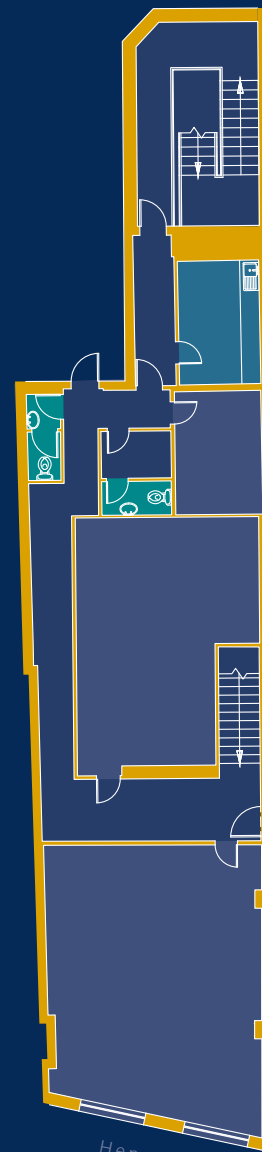
Henry Street

FIRST FLOOR



Henry Street

SECOND FLOOR



Henry Street

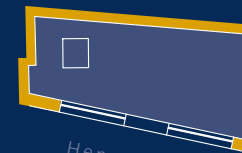
**No.19
HENRY
STREET**
DUBLIN 1

ACCOMMODATION SCHEDULE (NIA)

FLOOR	USE	SIZE (SQ. M)	SIZE (SQ. FT)
GROUND	Retail	160.8	1,731
	Storage	14.4	155
FIRST	Storage/Ancillary	163.1	1,756
SECOND	Storage/Ancillary	167.6	1,804
THIRD	Storage/Ancillary	19.6	211
TOTAL NIA		525.5	5,657
TOTAL GF Retail		160.8	1,731

*Basement available subject to retailer requirement

THIRD FLOOR



Henry Street



LOCATED ON THE BUSIEST PART OF
NORTH DUBLIN'S PRIME RETAIL PITCH

TO LET

**No.19
HENRY
STREET**
DUBLIN 1

AVAILABILITY

- Available to let immediately by way of new lease on modern lease terms
- Quoting terms on application
- BIDS 2023 - €3,483
- Rates 2024 - €71,460

BER C1

JOINT AGENTS

For further information contact



KEVIN SWEENEY

+ 353 (1) 6181748
kevin.sweeney@savills.ie
PSRA No.: 002223-006830



Tel: 01 6477900
www.bannon.ie

JENNIFER MULHOLLAND

+ 353 (1) 6477900
jmulholland@bannon.ie
PSRA No.: 001830-002156

Savills PSRA No.: 002223 | Bannon PSRA No.: 001830

These particulars are issued by Bannon & Savills on the understanding that any negotiations relating to the property are conducted through them. While every care is taken in preparing them, Bannon & Savills, for themselves and for the vendor/lessor whose agents they are, give notice that – (a) The particulars are set out as a general outline for guiding potential purchasers/tenants and do not constitute any part of an offer or contract. (b) Any representation including descriptions, dimensions, references to condition, permissions or licences for uses or occupation, access and any other details are given in good faith and are believed to be correct, but any intending purchaser or tenant should not rely on them as statements or representations of fact but must satisfy themselves (at their own expense) as to their correctness. (c) Neither Bannon & Savills nor any of its employees have any authority to make or give any representations or warranty in relation to the property. All maps are produced by permission of the Ordnance Survey Ireland Licence No. AU00470011 © Government of Ireland.